



Invogue[®]

We Design-We Build-We Deliver

**MANUFACTURER OF
PRE-ENGINEERED BUILDINGS**

About Us

INVogue BUILDING SYSTEMS (P) LTD started its journey in Pre-Engineered Metal Buildings in Apr 2011 and today we are a major player in this field. We have our manufacturing unit located at Greater Noida (U.P).

The company is carried forward with the professional approach of our mentor Mr. R.P. Singh, Who holds in depth knowledge about PEB industry. His strong insight vision and experience of more than 38 years in industry which is helping company to achieve great heights with customer satisfaction.

Invogue's core strength is its dedicated team of Engineers who have experience in Design, Fabrication and Erection. All our facilities are under one roof.

"Invogue" is now one of the respected name in PEB industry, whose commitment of quality is not comparable. We have our own standard and quality. We are fully dedicated towards after sale services as well. Customers are our valuable Assets.

We also provide Metal Building Components like Roof and Wall sheeting, Decking sheet, Skylights, Turbo-vents, Louvers, Ridge vents, Roof Monitors, Trims (Flashings), Rain water collection Gutter and Down take pipe (Disposal Systems).

Apart from PEB and its components, the company is also into Light Gauge Steel Framing systems (LGFS), Puf Panels, Porta Cabins and False ceiling systems.

WHY US..?

The Values We Live by...



We follows codes set in the manuals by –

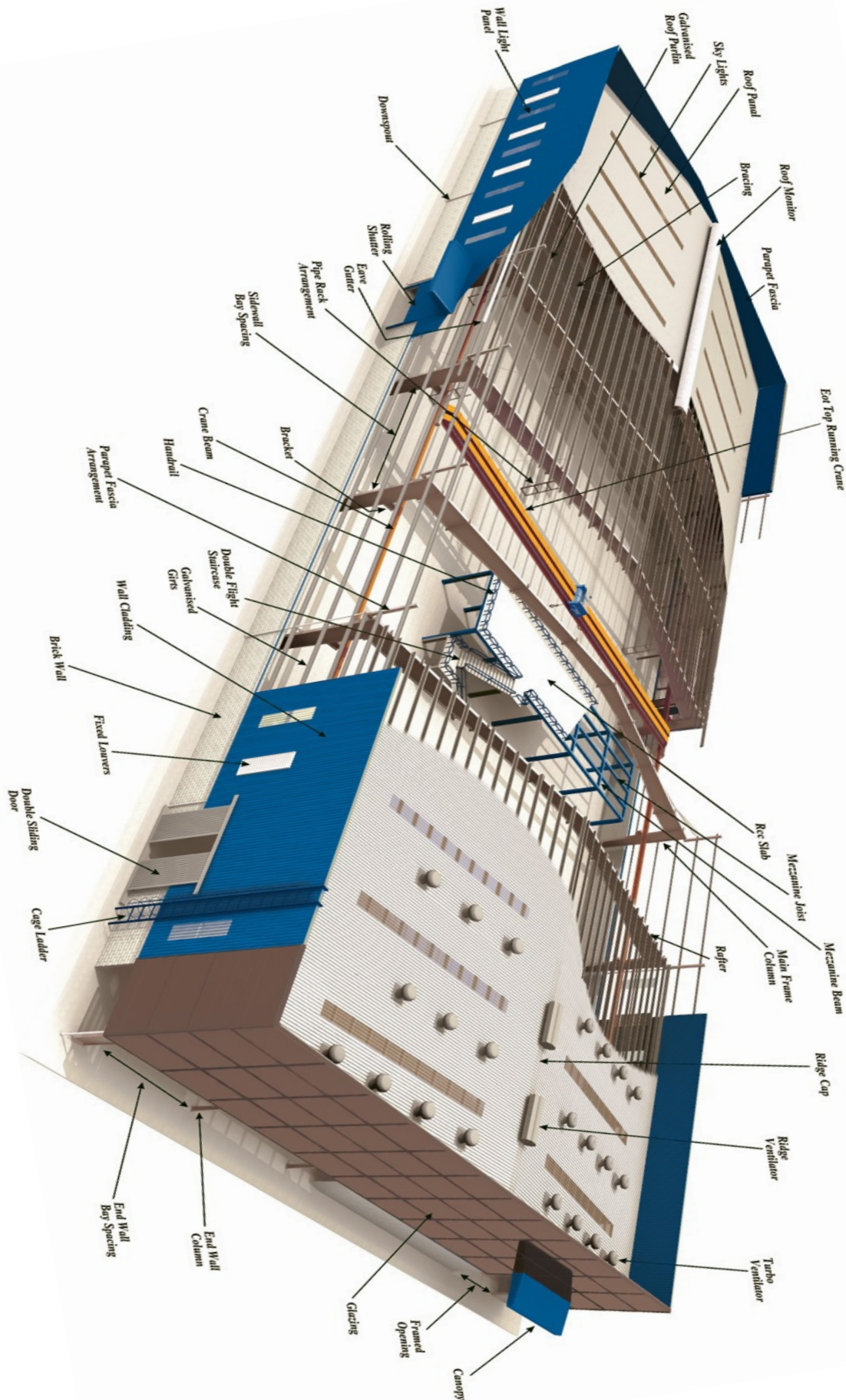


**American
Iron and Steel
Institute**



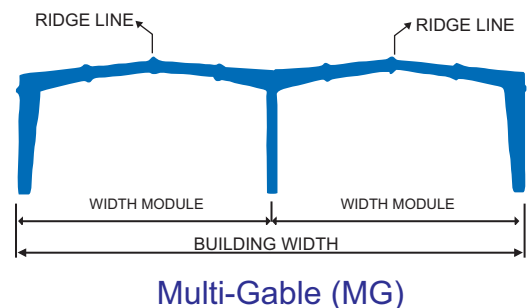
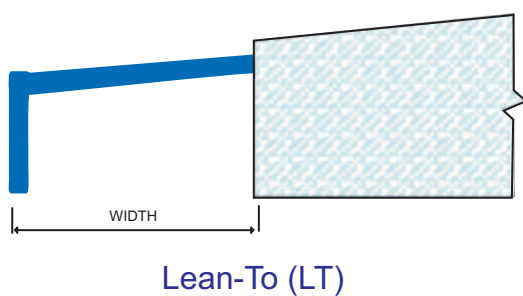
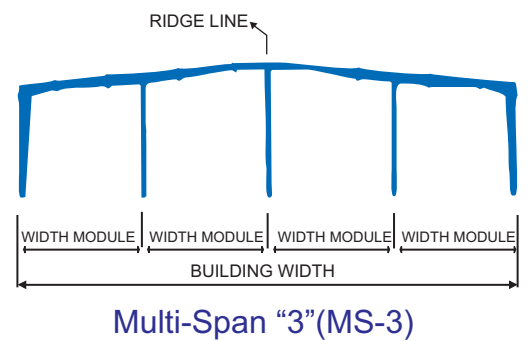
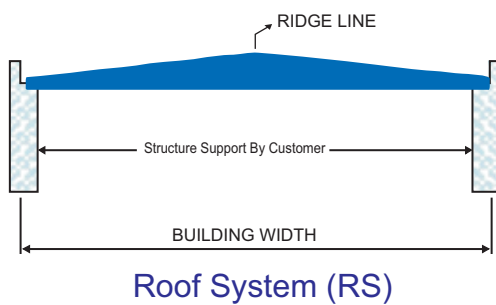
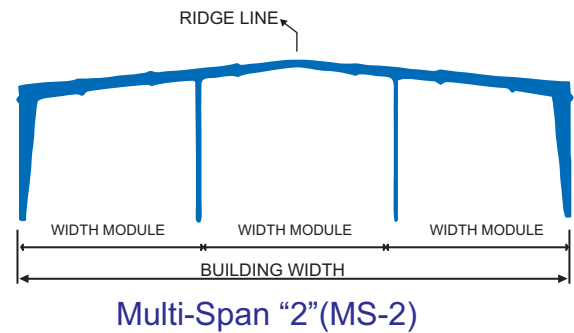
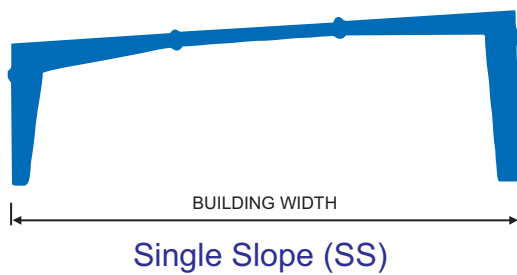
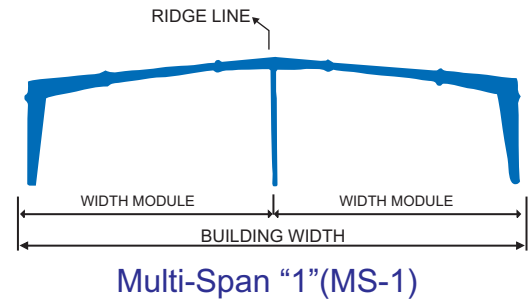
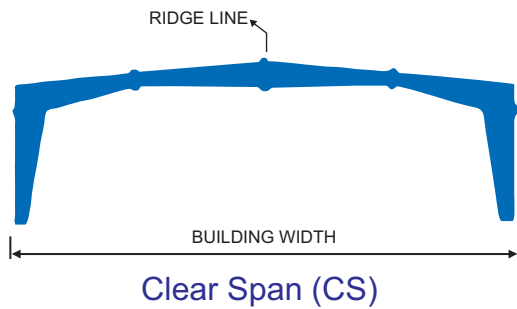
**American
Welding Society**

CONCEPT OF PRE-ENGINEERED BUILDING



PRIMARY FRAMING SYSTEMS

Invogue Buildings are optimized to meet specific requirements of each client. The most common primary framing systems are shown below. All frames shown are symmetrical about the ridge line. Framing systems asymmetrical about the ridge line and Multi-Span systems with unequal width modules are possible, but require special study. Practically any frame geometry is possible.



SECONDARY FRAMING

Secondary framing consists of elements which support the roof and wall sheeting and transfer load to the primary framing. These include Roof Purlins, Wall Girts and Eave Struts.

Roof Purlins

Roof purlins are cold formed Z profile, normally 200 to 250 mm deep made out of 1.6 mm to 3mm thick steel. These are fixed to the top flange of the rafters by means of clips bolted to the rafters, and purlins web bolted to the clips. Purlins ends overlap to act as continuous beams.

Wall Girts

Wall girts are cold formed Z sections, normally 200 to 250 mm deep made out of 1.6 mm to 3mm thick steel. These are fixed to the outer flange of the side wall columns by mean of clips bolted to the column and girt web bolted to the clips. Girts ends overlap to act as continuous beams.

Eave Struts

Eave Struts are C profiles, normally 200 to 250 mm deep made out of 2 mm to 3mm thick steel. These are fixed to the outer flange of the side wall columns by means of clips bolted to the column and eave strut bottom flange bolted to the clips.



CRANES AND MEZZANINES

Cranes in Buildings

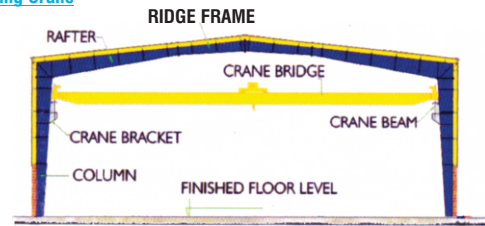
Invogue's PEB can be designed to accept most types of crane systems such as EOT, Monorail, Under-hung cranes and other load carrying devices like conveyors etc., in both clear span and multi span buildings. When a crane system is to be integrated, Invogue's scope is limited to brackets and crane runway beams which support the crane system. Complete information on the crane systems is required in order to design and estimate buildings with cranes.

Mezzanines in Buildings

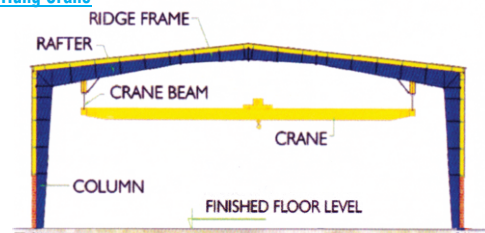
Intermediate mezzanine floors are possible in metal building, mezzanine can be provided in complete or partial area in PEB to suit loading requirement for office or storage. Mezzanine floors consist of Chequered Plate or Galvanized Decking Sheet, supported by joists connected to main mezzanine beams. Main beams normally run across the width of building and are located under main rafters while joists run parallel to length of building. Top flange of joists fit immediately below the top flange of mezzanine beam. A reinforced concrete slab (not supplied by Invogue) is casted on top of Galvanized decking sheet.

(Consult Invogue for advice on the most economical mezzanine design).

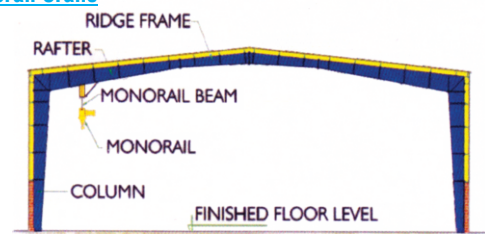
Top Running Crane



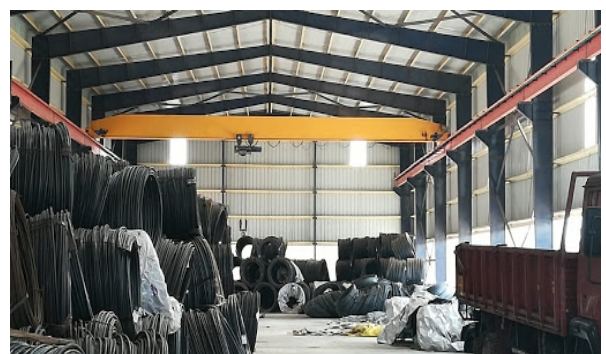
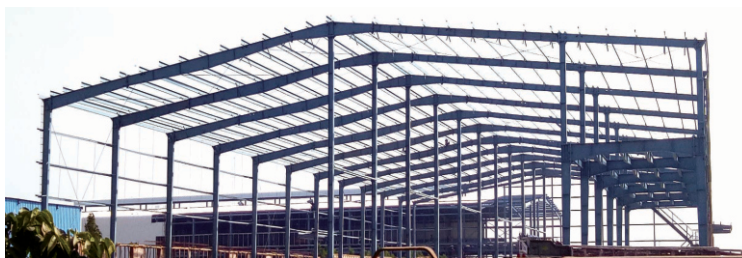
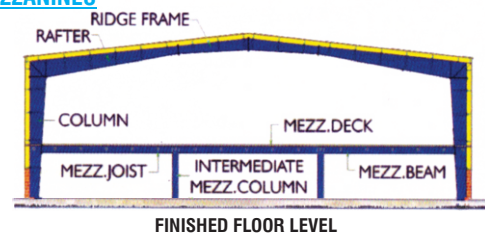
Under-Hung Crane



Monorail Crane



MEZZANINES



HI-RIB ROOF AND WALL CLADDING SYSTEMS

Hi-Rib Roofing and Cladding systems are metal sheets with corrugation, corrugation gives high strength to the sheets. Our sheets are light weight which gives 1000 mm wide coverage with 30 mm rib depth at 200-250 mm c/c with two/three stiffener ribs which makes it the strongest profile in its category.

Features

- ▶ Invogue Hi Rib sheets are a combination of both high strength and corrosion resistance with least maintenance cost.
- ▶ Easy and Faster to install, thereby cutting down project time.
- ▶ Lesser weight, thereby putting lesser load on structure.
- ▶ Weather Proof.
- ▶ Aesthetically pleasing.
- ▶ Eco-friendly.
- ▶ Better Scrap value.

Base Material – There are basically two types of material – Galvalume and Galvanized steel.

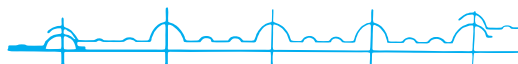
Galvalume : Galvalume high tensile cold rolled steel as per AS:1397, coating class AZ 150 (min 150gsm/m² zinc – aluminium alloy coating mass, total of both sides), 550 MPa/300 MPa yield strength. The alloy coating comprises of 55% aluminium, 43.5% Zinc and 1.5% silicon. Available in bare finish and colour coated finish with sheet thickness between 0.47mm to 0.60mm.

Galvanized Steel : Galvanized cold rolled steel as per IS:277, coating class Z 120 (min 120gsm/m² zinc coating mass, total of both sides), 240 MPa yield strength. Available in colour coated finish.

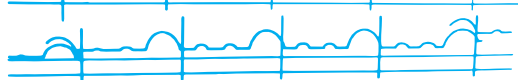
(Consult Invogue for any non-standard thickness/colour/yield strength - will be made available on demand.)

Fixing Procedure – The sheets shall be fixed over the purlins/Girts with Zylon coated hex head self drilling fasteners with integrated neoprene/EPDM washers.

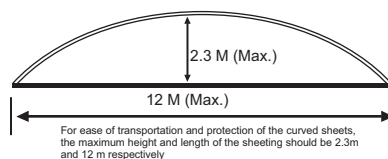
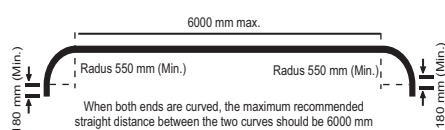
For Roof Sheeting



For Wall Cladding

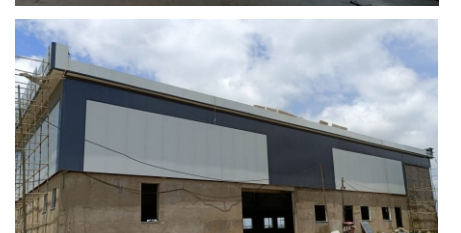
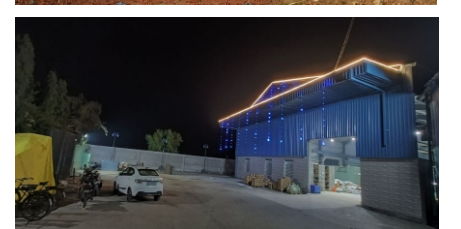


Invogue Hi-Rib sheet is also available in **Crimped Curved Shape**. It can be used to give building a unique aesthetic look.



-Bring new Design to buildings

-Reduction of many flashings/capping.



FURTHER OPTIONS FOR ROOF PANELS

We offer three more options for profile sheet i.e Klippon sheet, Standing seam sheet and Mangalorean Tile.

Klippon Sheet

Klippon sheet is designed to be fastened to the roof purlin with fixing clips which are concealed during fixing and do not require any fastening holes through the steel sheet. The clips for fastening klippon requires only two fasteners per clips. The two fasteners are inserted only through the two punched holes. Four dimples are also provided in the clips but these are for auxiliary fasteners only. All the ribs are clipped on and are interlocked. Klippon sheets are ideally suited for region which receive heavy rainfall and can be used on slopes as low as 1:20.

Standing Seam

The panels are joined and sealed together by a portable electric seamer. This roof system is attached to the building with unique clip arrangement. The sheets are custom rolled to any transportable length max upto 12Mtrs. However, our specialized service of on-site roll forming enables single length upto 100Mtrs long without end laps, therefore on most jobs you can have single sheet from ridge to eaves resulting into zero laps. It's recommended for roof slopes upto 1:50.

Mangalorean Roof Sheet

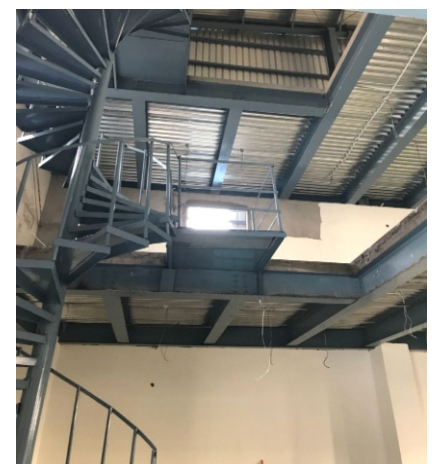
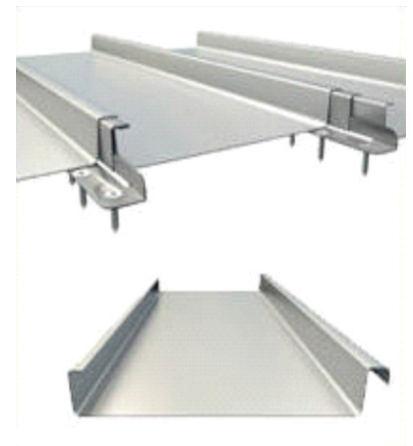
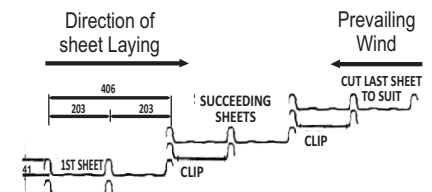
Also known as "Khaprail" sheet in Hindi. These sheets are aesthetically attractive, Light weight, strong and durable.

PARAMETER	DIMENSIONS
DEPTH	28 MM
PITCH C/C	177.5 MM
SUPPLIED WIDTH	987.5 MM
COVERED WIDTH	887.5 MM
AVAILABLE LENGTH	AS PER CLIENT REQUIREMENT
THICKNESS	0.40 - 0.60 MM

Decking Sheet For Mezzanine Floor

Decking Profile is used as a composite floor system and is easy to install, which makes its preferred choice. It gives a immediate access to a working platform.

PARAMETER	DIMENSIONS	DIMENSIONS
DEPTH	44 MM	51 MM
PITCH C/C	130 MM	230 MM
SUPPLIED WIDTH	960 MM	970 MM
COVERED WIDTH	910 MM	925 MM
LENGTH	MAX 12 MTRS	MAX 12 MTRS
THICKNESS	0.60 - 2 MM	0.60 - 2 MM



INSULATED ROOF AND WALL CLADDING

Heating or cooling is one of the largest operating expense in a building. That is why it is important that each building has good thermal insulation adapted for the usage of the building. We offer Glasswool roll insulation with foil scrim kraft (FSK) or white metalized scrim kraft vapour barrier, Bubble insulation, XLPE, Rockwool slabs and Puf Panels.

Invogue's Insulated roofing and wall cladding are individually designed for each project and adopted to the specific requirements of the customer. Single or double skin insulated roof and wall cladding represent a major breakthrough in meeting the demand for a versatile high specification system. The cost efficiency achieved makes it viable proposition for all users who require higher insulation values in term of energy efficient roof and walls.

Single Skin Insulation

Single skin insulation in metal building means insulation used underneath the sheeting as underdeck insulation. Insulation is rolled over the purlins or girts and the sheets are fixed to the secondary framing through the insulation. Only the vapour barrier is visible from inside the building.

Double Skin Insulation

Double skin insulation in metal building comprises of internal liner panels directly screwed to the secondary framing, sub-girts screwed through spacer blocks and liner sheets to the purlins below. Glasswool roll insulation/Rockwool slabs is laid over the sub-girt and finally the outer panel is screwed to the sub-girt through the insulation. Double skin wall cladding comprises of an internal liner screwed to the inside face of girt and external sheet is fixed with insulation on the outside of building.

Puf Panels

PUF Panels are lightweight, durable and energy efficient panels. They are suitable for many different applications. They are used in commercial / industrial buildings, warehouses, cold storage, clean room, telecom shelters, labor hutment, ripening chamber, porta cabin, security cabins, site offices, prefab toilets and prefab structures. They are just perfect for roofing and wall cladding purposes. PUF Panels have many benefits including energy savings, better thermal insulation, high load-bearing capacity, durability, weatherproof, resistant to corrosion and physical impact etc. Also, they offer easy installation and flexible design options.

We offer wide range of thickness of panels as below –

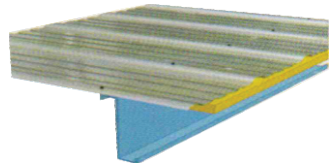
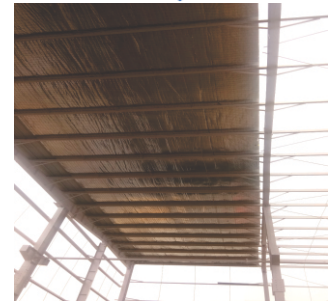
Roof Panels - 30 mm, 40 mm, 50 mm, 60 mm, 80 mm, 100 mm, 120 mm, 150 mm.

Wall / Ceiling Panels– 40mm, 50mm, 60mm, 80mm, 100mm, 120mm, 150mm.

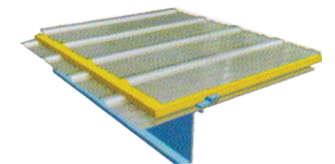
These Panels comes with density of PUF in the range of 38 Kg/ M3 to 44 Kg/ M3 and most common used density is 40kg/m3.

Items usually used either side of Puf are -PPGI sheet , SS sheet, Al. sheet, Craft Paper, Al. Foil. Client has a choice they can make any combination as per his requirement. we can totally customized as per client needs. Most common is PPGI/PPGI.

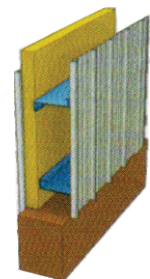
Commonly used PPGI Sheet Thickness : 0.40 mm, 0.45mm and 0.50mm
(Higher Puf density & better sheet thickness will be provided on demand).



Single Skin Insulated Roof



Double Skin Insulated Roof



Double Skin Insulated Wall



ACCESSORIES



TURBO-VENTS



ROOF MONITOR



POLYCARBONATE SHEETS



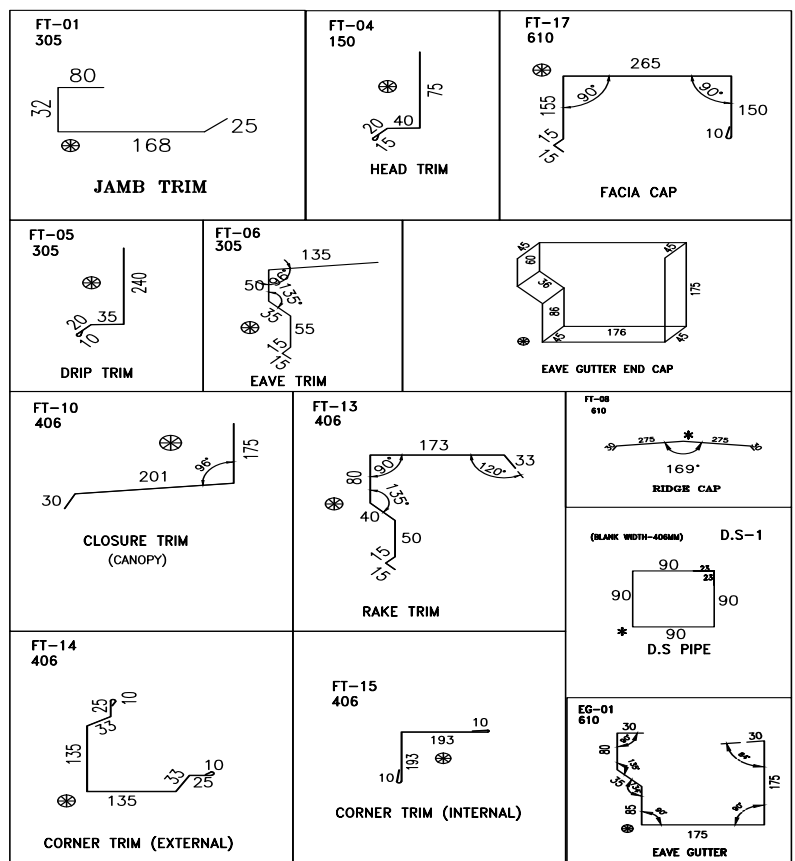
UNDERDECK INSULATION



RIDGE VENTS



LOUVERS



STANDARD FLASHINGS AND TRIMS

LIGHT GAUGE STEEL FRAMING SYSTEMS

Steel is widely used in the construction of multi-storey buildings. However, steel construction is seldom used and is traditionally considered uneconomical for landed properties. In many parts of the world, timber, brickwork and reinforced concrete construction is usually preferred for landed properties. There is no denying the fact that steel is the future of sustainable construction. Over the years, various improved systems have been developed for use in landed properties. An economical light gauge steel frame system is increasingly being used in America, Europe, Australia and New Zealand. This light gauge steel frame is developed through a cold-formed process without the use of heat. This process enables steel manufacturers to produce light-weight but high tensile steel sheets. The sheet surface is coated with a zinc alloy that completely covers the steel surface and seals it from the corrosive action of its environment. This results in buildings that are more solid, rigid, stronger, durable and easier to build.



LGFS members are made from cold formed galvanized steel profiles and are produced automatically by combining latest software and machine control system imported from leading technological partners from abroad. Invogue LGFS is ideal for situations where speed, reliability and flexibility are critical in delivering a project. Every output is accurately formed, cut, punched, dimpled and individually labeled and ready for 'screw together' for assembly. Once at the site, they can be further assembled as per architectural drawings, in no time by simply snapping the wall frames and floor joists together and fixing them with self-tapping screws. In the gaps between the elements of the frame heat insulation material is placed and the frame is supplied with surface layers made of various materials, forming a layered structure.

Invogue uses the best dry technologies, already tested and available in the market, to design modular buildings with standard components. The structural components of the floor, wall and roof are totally prefabricated by us as we are the experts.

- ▶ **Your Building, the way you want it. Tell us what you have in your mind and watch it rise in steel.**
- ▶ **No matter where you are, we can build for you.**

Steel Building Process:

- ➡ Architects design process
- ➡ Production of steel framing
- ➡ Building Construction.
- ➡ Designing the steel framing
- ➡ Assembly

There are many options for Exterior and Interior finishes with un-matched quality.

Exterior Finishes

- ▶ Metal roofings.
- ▶ Exterior grade cement board.
- ▶ Metal wall claddings.
- ▶ Glazing/wooden panels.
- ▶ Veneer finishes.



Interior Finishes

- ▶ Gypsum board wall panels.
- ▶ Vitrified tiles.
- ▶ Metal or gypsum false ceilings.
- ▶ Ply board wall panels.
- ▶ Veneer finishes.



Our moto is to promote the light steel framing system similar to systems used for buildings in countries like America, Europe, Australia and New Zealand. it is very extensively used in almost all building construction in developed countries due to few of its unique features and advantages.

Invogue Light Buildings system has got un-matched advantages, few of them have been listed below for you reference-



- ▶ Can be made according to customer plan ie-shape, size and design.
- ▶ Time saving for construction.
- ▶ No pollution during construction.
- ▶ Insulation system reduces energy consumption and acts as sound barrier from outside.
- ▶ Earth Quake and wind resistance.
- ▶ Termite proof.
- ▶ Water Proof, Fire proof and moisture proof.
- ▶ Dismantling possibilities if required.
- ▶ Ultimate in zero maintenance construction.
- ▶ Stylish, contemporary and innovative design.
- ▶ Sustainable and environmentally friendly build.
- ▶ Can be legally classed as 'temporary' (depending on the model).
- ▶ All steel material is 100% recyclable.
- ▶ Less weight (yet very strong) than wood members and Concrete results lighter foundations and less probability of damages in an earthquake.
- ▶ High strength results in safer structures, less maintenance and corrosion resistant.



PREFAB SITE OFFICE / CLASSROOM / ROOF TOP SHELTER

We offers modular prefab site office with PUF insulated panels with M.S. Structure/ Light gauge steel framing (LGSF) solution. In an era where time is money, Invogue prefab office is a viable solution as it is quick and easy to erect. We offer the complete turnkey solutions under one roof starting from designing, fabrication, production and installation. Products offered by us are of premium quality and are classified as temporary structure with the advantage of reusability without discounting the durability. These are constructed with insulated panels and thus are best suited for adverse climatic conditions.

Benefits –

- ▶ It can be customized as per customer requirement.
- ▶ More comfort in adverse conditions due to insulation.
- ▶ Large view glasses are possible to be fixed with the insulated panel doors without any extra support.
- ▶ Dry construction, quick and easy to erect.
- ▶ Fixing of smoke detectors and fire fighting equipments are possible for better safety and Ac's can also be fixed for comfort.
- ▶ All weather proof construction.
- ▶ Flexibility of expansion and relocation.



PREFABRICATED SECURITY CABINS

Invogue guard room / security cabins are one of the most exclusive quality products. These modular guard cabins are offered in prefab structure with insulated panels of PUF. These are manufactured for security guards to stay and keep an eye on the visitor's and persons entering the premises of factory building, warehouse, commercial complex, offices, institutions and other such places.

Benefits –

- ▶ Long lasting and durable structure.
- ▶ Flexibility in sizes.
- ▶ Thermally insulated.
- ▶ Best material quality.
- ▶ Good Aesthetics.

Benefits –

- ▶ Easily affordable and comfortable due to heat insulation.
- ▶ All weather application.
- ▶ Corrosion resistant.
- ▶ Re-locatable.



WORKERS ACCOMODATION / LABOR HUTMENT

We have seen in the recent times that the availability of workers is scarce. Therefore it is very important for all organizations to retain them for long term. The amenities provided by the employer plays a major role for the same and to ensure labor retention, it is a must to grant them comfortable accommodation i.e prefabricated labor hutments produced by Invogue.

Benefits –

- ▶ Custom designed as per client requirements and space availability.
- ▶ Re-locatable / Re usable for any purpose.
- ▶ Thermal insulation and electricity facility.
- ▶ Quick delivery and installation services.
- ▶ Economical and cost effective.
- ▶ No maintenance cost.
- ▶ Weather and termite resistant.
- ▶ G+1 or G+2 structures can also be provided if there is scarcity of land.

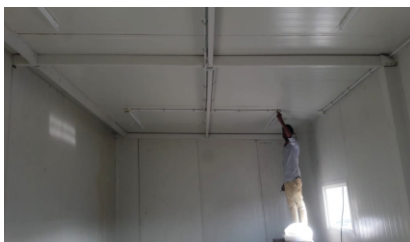
Specification –

- ▶ Wall: PUF insulated sandwich panels of 40/50/60 mm with PPGI sheet on both sides.
- ▶ Roof: PUF insulated sandwich panels of 30/40 mm with PPGI sheet on both sides.
- ▶ Doors: Insulated Doors with all accessories will be provided.
- ▶ Windows: Aluminum anodized sliding/openable windows will be provided.
- ▶ M.S. Structure with all required supporting accessories will be provided.
- ▶ Electrical fittings, sanitary fittings, beds etc will be provided as per client requirements/client scope.



PORTABLE CABIN

Portable Cabins don't come better than the ones from Invogue, a no compromise approach to perfection and customer satisfaction. Movable Cabins are the optimal solution for frequent use of buildings in different locations and with easy installation and durable structure. They require no foundation work and have a Great resistance to natural disasters and weatherproof.



We design cabins as per customer's specific requirements. The basic building frame is formed from M.S. sections, each fully welded to form a rigid framework into which a wall panels, doors and windows are fitted.



COLD ROOM AND COLD STORAGE

We make Cold Room and Cold Storages from PUF insulated panels, these are tested to operate in the toughest of Indian conditions and are made with advanced technology. These are designed for Hotels Industry, Catering Firms, Retail Stores, Pharmaceutical Companies, Hospitals, Supermarkets, Meat Industry, Dairy and Ice Cream Industry. Our cold rooms are suitable for both small and large scale applications.

Benefits –

- ▶ High and consistent quality as the panels are factory made with Camlock and tongue and groove options.
- ▶ Dry construction, quick and easy to erect.
- ▶ Ease of expansion and change in layout as the construction is pre-engineered and modular in nature.
- ▶ Flexibility to choose the various thicknesses of panels based on the desired temperature requirements.
- ▶ Higher energy savings and high performance due to very low thermal conductivity.
- ▶ Options available with various finishes like PPGI / PPGI, PPGI / Aluminum Foil, PPGI / SS, SS / SS.



RIPENING CHAMBERS AND GROWING ROOMS

Ripening chambers are required largely at different food processing and preservation units. Depending on the specific requirement, we offer ripening chambers that are suitable for various types of fruits and precisely engineered to meet their requirements. We offer a high quality and innovative solution that meets the industrial safety and performance standards. Your search for the perfect mango ripening chamber, banana ripening chamber and all other fruit growing units ends at Invoque. As we are the trusted name offering you a variety of chambers that are made with premium quality materials and have been in the domain for many years bringing you the best quality solutions.

Benefits –

- ▶ Construction as per specific client demands and various options for design layouts available.
- ▶ Optimal heat efficiency with the use of top quality insulating panels.
- ▶ Smooth operation and low maintenance costs.
- ▶ Based on the ripening requirements walls of various thicknesses and insulating abilities available.
- ▶ Lightweight construction and clever design makes them easily portable.
- ▶ All the joints between walls, ceilings and floor are leak proof.
- ▶ Due to water contact during cultivation, the fruit ripening chambers are made of corrosion resistant materials.
- ▶ Options available with various finishes like PPGI / PPGI, PPGI / aluminum foil, PPGI / SS, SS / SS.



METAL FALSE CEILING SYSTEMS

We always focus on the fact that we need to provide the best to our customers for their 100% satisfaction. This has led us to among the top companies that deal in false ceiling. We are committed with quality and our customers are always in our focus. Our classy and world class designs of products always harmonize with the interiors of the building and give the architecture an exquisite dimension.

LINEAR CEILING SYSTEMS

Our Linear or strip ceilings provide an aesthetic linear finish to any interior. Available in a variety of profiles and modules, including 84R, 84C, 184C 150F, 200F, 75C, 150C, 225C, 30B, 30BD, 130B and 180B. The panels are available in coil coated steel and aluminium substrates. Perforated profiles are also available for acoustic applications. Panels are available in lengths up-to 5-6 meters, to suit your design requirements. These stove enameled panels are recyclable, lightweight and strong. The wide choice of colours available make it possible to create virtually any ceiling design you can imagine.

84R

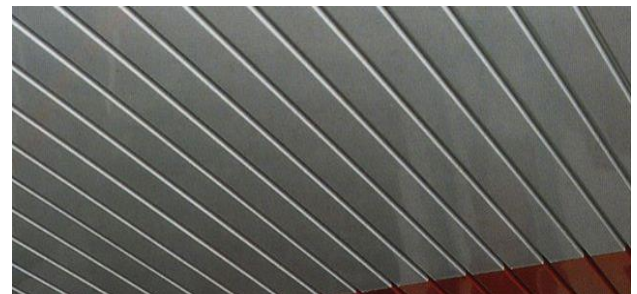
is meant for both interior and exterior applications. The round edges on this profile creates a special effect. Between the panels there is open joint of 16mm which can be filled with a 16mm wide flush profile to form a flush closed ceiling appearance (100 mm module, 90 mm module is also available with 6mm gap). Panels can be replaced for easy maintenance or for a new look we have variety of colors. In order to improve interior sound control 84R panels can be perforated. Perforated panels can be supplied with a sound absorbing non-woven tissue glued into the enhanced acoustical performance.

- ▶ These panels are also available in curve shape.
- ▶ Mostly used as Sun Louvers with stringers.



84C/184C

Closed ceiling system consist of box shaped panels which can be easily clipped on its carrier. These panels features 24mm wide flange that closes off the 16mm joint between the panels. (module 100/200 mm). In order to improve interior sound control 84C/184C panels can be perforated. Perforated panels can be supplied with a sound absorbing non-woven tissue glued into the enhanced acoustical performance.



150F/200F

Ceiling system consists of 150mm and 200mm wide panels which can be simply clipped into the prongs of a 150F or a 200F carrier. These profiles are meant for both interior and exterior applications. 150F and 200F panels can also be used as façade cladding. We recommend this in our steel building application also.

- ▶ These panels are mostly used at Petrol Pumps. We also called these ceiling as Petrol Pump Ceiling.



75C/150C/225C

Our closed ceiling system combines three width of panels which are distinguished from other system by their beveled edges and when installed produces a closed smooth appearance. All three width can be clipped to a universal carrier, thus provides the designer with unlimited possibilities. In order to improve interior sound control 75C/150C/225C panels can be perforated. Perforated panels can be supplied with a sound absorbing non-woven tissue glued into the enhanced acoustical performance.

- Combination of these three profiles known as Multi-C.



30B/80B/130B/180B/30BD/30BXD/80BXD/130BXD

Multi panel ceiling system consist of box shaped panels in 8 varying widths (30mm – 180mm). All panels can be clipped to a universal multi panel carrier, creating the opportunity to use panels with different width and heights (15mm, 39mm and 64mm) in one ceiling. Between the panels there is open joint of 20mm which can be filled with recessed profile. This recessed profile can simply inserted in the open joint by hand without an additional tools. The key feature of this system is the endless permutations and combinations of panel widths and height which paves the way for architects to create unique designs by using the same system repeatedly.

- Combination of these profiles known as Multi-B.



WIDE PANEL CEILINGS

Our Wide Panel Ceilings enables the architect to design a closed ceiling with high performance aluminium or steel materials. In order to give maximum freedom in design there is a wide choice in panels with soft edges for a monolithic ceiling appearance or panels with square edges which results in a smooth ceiling with a narrow butt joint.

300C

The 300 mm wide panels are made to measure to a maximum standard length of 6000 mm. They can simply be fixed on the carrier by hanging one side of the panel on the prongs of the carrier and pressing the other side with an upward movement. These panels are recyclable, lightweight and strong. In order to improve interior sound control 300C panels can be perforated. Perforated panels can be supplied with a sound absorbing non-woven tissue glued into the enhanced acoustical performance. Even these panels can be easily demounted by hand allowing easy and full access to services.

- This system is also available for exterior use.



OPEN CELL CEILING

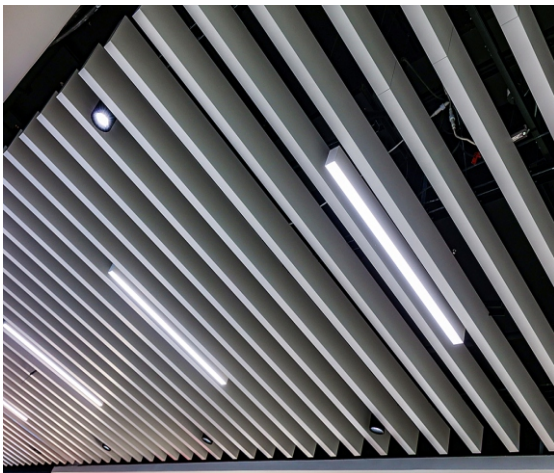
Cell Ceilings enable architects to design an open ceiling with high-performance aluminium and G.I material. These "U" profile has a width of 10mm and height of 40mm/50mm. With a wide variety of cells and patterns, these ceilings offer maximum freedom in design. The panels simply connect to each other with easy lock in system of main runner and cross runner. When grid system is not required, the Lock-In system of Main and Cross provides architects and designers with additional flexibility, especially in customized sizes and different colors. Modules vary from 50 x 50 mm to 200 x 200 mm and can be customized upon request. A wide range of colours and finishes are available, and special colours can be provided upon request. The panels are easily (de)mounted with the sliding clips.

**BAFFLE CEILING**

Baffle Ceilings are perfect for acoustics and noise control in public areas. From a design point of view, Baffle Ceilings offer a spatial pattern with a linear open ceiling. From a practical point of view, it is easy to install and access the ceiling and additional services such as lighting, PA system, sprinklers etc. Our wide variety of products, colours, and finishes can be combined to create dramatic, high-quality ceilings. Consisting of vertically hung, 'floating' panels, they can create unique visual patterns without compromising the sense of space. These are lightweight and consists of box-shaped panels. The baffles are available in both aluminum and steel. The baffles are made to measure and available in any length up to 4000 mm. For increased acoustic performance, a non-woven tissue can be inserted into the baffle.

Width – 25mm/30mm/50mm.

Flexible Height within 50 mm -200 mm can be achieved if required on request.



METAL TILE AND PLANK CEILING

Our Tiles and planks ceiling are available with a variety of suspension arrangements including clip-in and lay-in systems. Tiles and planks ceiling are available in coil coated and powder coated galvanized steel, aluminium powder coated and stainless steel. These are Simple and cost-effective metal ceiling systems. These ceilings tiles offer classic ceiling solutions, featuring different sizes and edge options, and compatibility with standard features. This is a simple and economical way to add metal ceilings to a project. In order to improve interior sound control Metal tiles can be perforated. Perforated tiles can be supplied with a soundabsorbing non-woven tissue glued into the enhanced acoustical performance.

LAY-IN TILE

Lay-In tiles are designed to be installed in conventional T-Grid systems with T-Bar sizes of 15 mm or 24 mm. The exposed T-Grid of Lay-In Tiles enhances the modular design pattern. Lay-In Tiles provide easy access by lifting and shifting the ceiling tiles. They are ideal for situations where regular maintenance or service is required to ducts, pipes or computer or telephone networks. Before selecting this system, care should be taken to ensure that there is enough space in the plenum to lift the tiles upward.

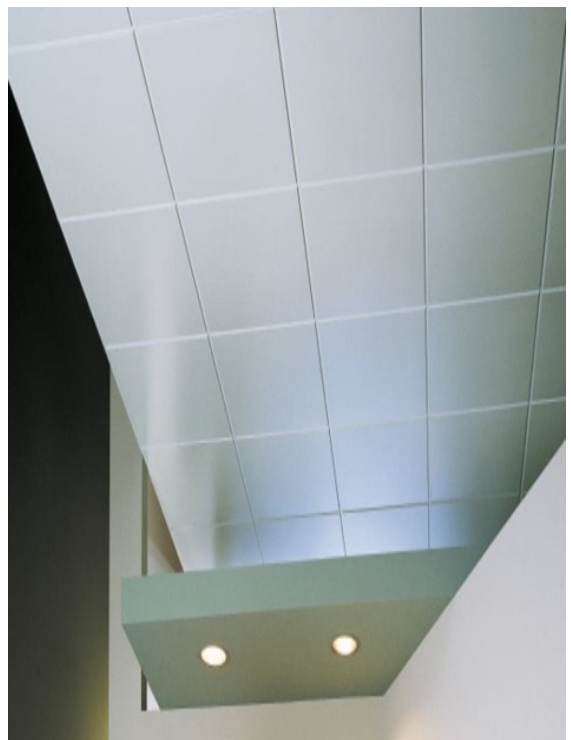
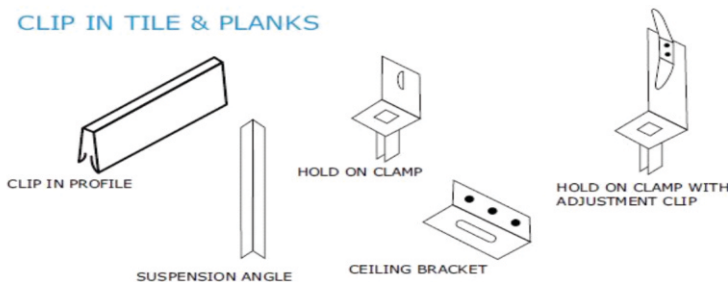
LAY-IN SUSPENSION



CLIP-IN TILE

The Clip-In Tile system has a bevelled edge to form visually closed joints. The bevel will emphasise the crispness of the tile ceiling design with fine joint lines. Clip-In Tiles are available in a wide variety of pre-defined rectangular module sizes that are commonly used in ceiling design. Dimples in the longitudinal tile-edges, enable each tile to be clipped into the concealed grid system. Closed joint details make the Clip-In Tile systems ideal for areas related to hygiene. Individual tiles can easily be released from the grid-profiles with a simple tool that is inserted between adjacent tiles on both edges, combined with downward pulling.

CLIP IN TILE & PLANKS



Our Prestigious Clients

अमर उजाला
जोश! सूच का!

amazon



NEXA
MARUTI SUZUKI



INVogue BUILDING SYSTEMS PRIVATE LIMITED

Delhi Office : C-3, 3rd Floor, F.I.E, Patparganj Industrial Estate, Delhi- 110092

Plant Address : 3H, 3I, Ecotech-2 (Udyog vihar), Greater Noida, G.B. Nagar, U.P.-201306

Branch : H.No.-16, 2nd Floor, Katia Dolong, North Jalukbari, Distt.-Kamrup, Guwahati, Assam-781014

Phone No. : 011-42801202, 9810076929, 9810664929, 9810890929, 9810336929

E-mail : contact@invoguebuilding.com | Web : www.invoguebuilding.com, www.invoguebuildings.com